

Name \_\_\_\_\_

Date \_\_\_\_\_

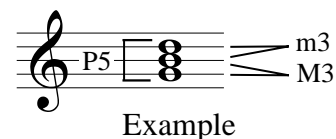
# Close Root-Position Major Triads I -

A root-position **major triad** is composed of three notes stacked in thirds.

The interval between the bottom two notes (root and third) is a major third (**M3**).

The interval between the top two notes (third and fifth) is a minor third (**m3**).

The interval between the bottom and top notes (root and fifth) is a perfect fifth (**P5**).

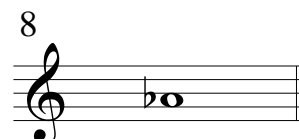
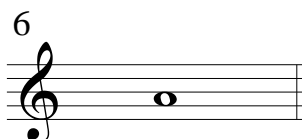
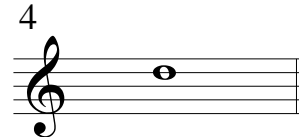
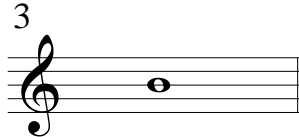
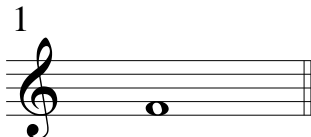


Answers in this exercise are limited to **close root-position major triads**.

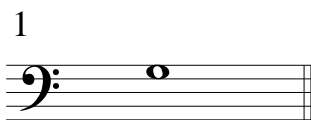
1. Create close root-position major triads using the provided notes as roots.

Create the third of the triad by adding a note a M3 above the root.

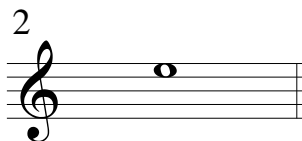
Create the fifth of the triad by adding a note a P5 above the root (a m3 above the third).



2. Triad position is indicated for each of the notes below. Add notes to create close root-position major triads.



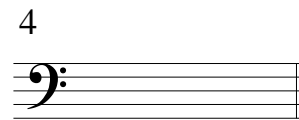
third



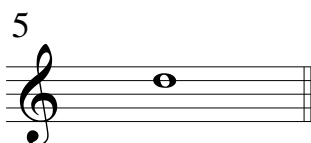
third



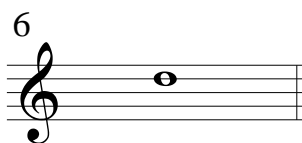
fifth



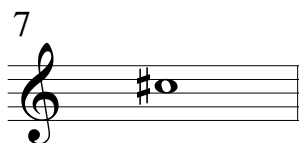
root



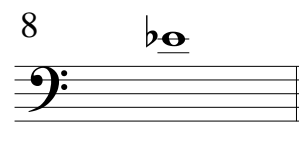
fifth



third



root



fifth